



LESBURY PARISH COUNCIL

NEWSLETTER

(Issue 34 - April, 2013)

5th Birthday- The first edition of the Newsletter was produced in April, 2008 and was a pilot project for 5 editions funded by Community Action Northumberland (CAN). You liked it and so here we are 5 years later and going strong. Thank you for your support.

County Council and Parish Elections - These will be held on 2nd May 2013. Nominations closed on the 5th April and Lesbury had the following nominations:- Gareth Breese, Robert Dutton, Vivien Kay, David Knowles, Roger Styring, Pat Tulip, Tom Wilson and John Wright. All are your current Parish Councillors. As there were fewer than 10 nominees our Parish does not need to hold any election for the Parish Council. Two Councillors have taken the opportunity to stand down; Ray Brunton has served the Parish for 20 years and Alma Duncan has been on the PC for 2 years. The PC would like to thank both for their assistance and participation; Ray, in particular has seen a lot of change in the village and deserves a special accolade for his years of service.



The Northumberland Estates

Proposed development, Lesbury Main Road- The PC meeting of 26th March was attended by 12 parishioners who raised concerns about this planning application. Prior to the meeting the Chairman had circulated the Application Documents to ALL Councillors to review; no prior discussion between councillors took place until the Council Meeting. On receiving the application both NCC and Northumberland Estates were contacted by our Chairman to convey the P C's disappointment with the quality of the submission; consequently the plans

were revised and the time to comment back to NCC was extended. This enabled a full discussion at the March PC meeting to determine if the PC would support the application. Various concerns were raised by parishioners including the density of the development, impact on the sewage system, materials to be used for construction, parking issues and the potential for sale of the houses as holiday homes. All 8 members of the PC present at the meeting voted unanimously in favour of the development. Our response to NCC stresses the following; that the planners resolve the above issues and in particular sewage overflow into the picnic area by Steppey Lane Bridge, that they ensure that the entrance to the development is finished in stone matching the existing boundary walls, that no gateway be made from the development into Riverside and, if possible, covenants be placed on each property prohibiting sale as holiday homes.

Northumberland in Bloom- The Parish has been entered for the second year in the competition; last year we did quite well for a first time entry with the judges reporting "Lesbury has a superb natural setting. The newly formed action group has set about developing the strong entry in an environmentally sympathetic way. The portfolio listing achievements so far was impressive." HOWEVER they also listed areas for improvement "The high profile, large grass area near Lealands Estate, would benefit from upgrading and a little more colour-sustainable plants perhaps." With advice from the NIB judges our aim is to enhance the Parish without changing its character. You can help in various ways for example, by assisting workgroups at the Lealands garden (Wednesdays at 2.00 pm, Fridays at 10.00 am.) Now is the time for litter pickers to get out their pincers and gloves, residents your brooms and let's see if we can improve on last years rankings. The first visit from the NIB judges is on Monday, 29th April.



Lesbury Village Hall Annual General Meeting- This will be held at 7.30pm on Tuesday, 21st May, 2013. This is your village hall and we hope that residents will show their support and attend the meeting particularly to hear of schemes which are in progress to improve the hall facilities. Groups or organisations hiring the hall are entitled to a discount rate providing that they each supply a representative to attend as a full committee member and not just

as an observer. The hall caters for a wide range of activities and, with your interest and support, can be improved and maintained as a vital part of village life.



Area of land opposite the Coppice- Our newest Parish Councillor, Dave Knowles, has been taking an interest in the land opposite the Coppice and the corner of Curly Lane and in particular the trees surrounding and impinging on the power cable and overhanging the footway. He is following up the situation with NCC, Northumberland Estate (who owns the land) and it is hoped that action will be taken soon to lop off branches near the cable and to eventually tidy up the site. N E said that they will deal with the dangerous trees in the wood. NCC have visited site and informed Dave that the branch resting on the power cable does not warrant them cutting it down, however, he will ask them again to cut down branches that are hanging over the pavement.



Around the Parish- The PC would like to thank NCC for their prompt action in repairing the wall of the Memorial Garden following a motor vehicle accident near to the road bridge. Repairs are also needed to the Mill wall to seal the top to avoid water penetration; this will have to be a specialist job using lime mortar to

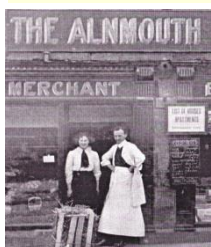


meet Natural England standards. The anglers amongst you will be pleased to note that the River Aln Angling Association has re-stocked the river with 250 young, 10 inch, trout; you may even be lucky to see some of them from Steppey Lane Bridge.



Nature note- If you see a small grey and orange bird walking head first down a tree trunk; it will be a nuthatch, with specially designed claws for just this feat. Two were calling in Lesbury churchyard and could be prospecting for a nest site, as they have bred there before. About the size of a great tit, though with a short tail, it has a stumpy neck with a white chin, a big head and a black eye stripe. Hidden in a tree hole, the nest could have mud plastered around the entrance to stop woodpeckers getting too nosy. So, as you are walking around the church and hear

some loud avian calls, it could be worth spending time watching the tree trunks to see the antics of this quirky bird. (photo Mark Hancox)



History for All – You might think that Alnmouth Local History Group has no interest in Lesbury, but that's not so. A recent project has been to record and photograph the gravestones of St. Mary's churchyard. Why? Because, for over a hundred years, Alnmouth lacked a church so many of its inhabitants were interred (expensively) in Lesbury. Their next venture's a far more cheerful affair: Edwardian villages, especially their shops. Like to join in? Tel: Adrian Osler (Lesbury), 01665 830112.

WRVS is a national charity and celebrates its 75th Birthday this year. Due to the review in local bus routes and transport cuts across Northumberland they need volunteer drivers for the Getabout Community Transport scheme within your Parish. **If you are interested please contact: Rachelle Atchison (Service Manager for Getabout Community Transport Scheme) on 07834 753 387 or 0845 266 8906.**

Your Parish Council Contacts.

Parish Clerk - Mrs Elizabeth Taylor, Rivendell, Steppey Lane, Lesbury, NE66 3PU, Tel: 01665 830040, e mail. lesburyparishclerk@googlemail.com

Parish Council Chairman: Tom Wilson 01665 830522, email lesburyparish@yahoo.co.uk

Parish Council meetings are held in Lesbury Village Hall on the 4th Tuesday of the month. All residents are welcome to attend.

A full list of Parish Councillors can be found at www.lesbury-pc.org.uk